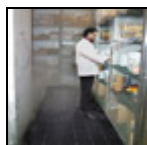
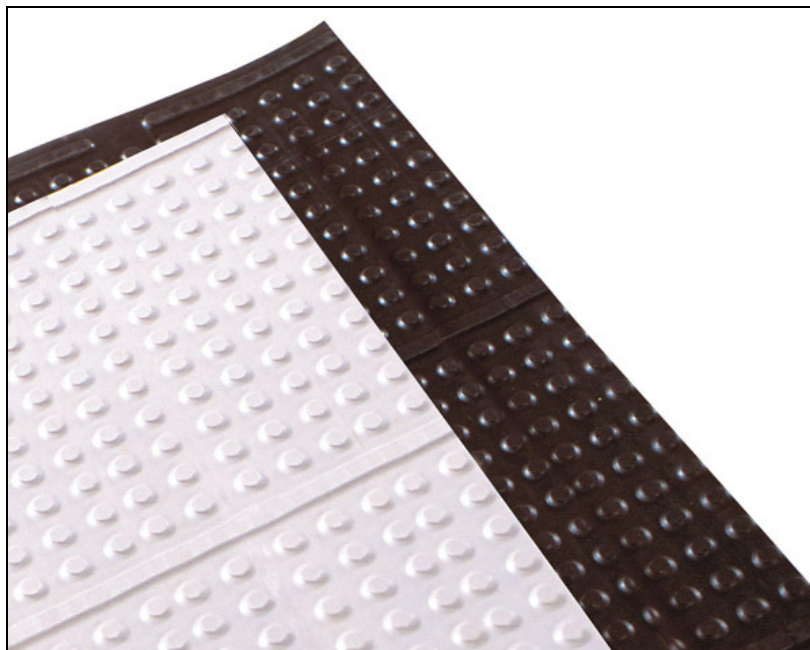


Deep Freeze Walk-in Freezer Kitchen Mats



This is the only rubber mat that is specifically formulated to perform in deep-freeze environments. This anti-slip matting features a raised-knob, solid top surface to enhance traction. Best used in meat lockers and specialty freezer applications.

- Tested to withstand temperatures to minus 40 degrees Fahrenheit (approximately minus 40 degrees Celsius).
- These mats are reversible to extend service life.
- Available 3/8" thick.
- All kitchen mats are made with nitrile rubber and both colors are 100% grease-proof
- Due to the unique rubber compounds used in manufacturing, this mat cannot be perforated.

Item No: KDF

Standard Sizes (Approximate)

Size	Qty. 1	Qty. 2-10	Qty. 11-25	Qty. 26+
2' x 3'	\$79.80	\$79.26	\$79.02	\$77.40
2' x 5'	\$133.00	\$132.10	\$131.70	\$129.10
2' x 8'	\$212.80	\$211.36	\$210.72	\$206.40
2' x 10'	\$266.00	\$264.20	\$263.40	\$258.00
3' x 3'	\$119.70	\$118.89	\$118.53	\$116.10
3' x 5'	\$199.50	\$198.15	\$197.55	\$193.50
3' x 8'	\$319.20	\$317.04	\$316.08	\$309.60
3' x 10'	\$399.00	\$396.30	\$395.10	\$387.00
4' x 5'	\$258.00	\$266.00	\$264.20	\$263.40
4' x 8'	\$425.60	\$422.72	\$421.44	\$412.80
4' x 10'	\$516.00	\$532.00	\$528.40	\$526.80
2' x 60'	\$1,449.60	\$1,443.60	\$1,440.08	\$1,335.49
3' x 60'	\$2,174.40	\$2,170.58	\$2,166.60	\$2,161.90
4' x 60'	\$2,899.20	\$2,896.10	\$2,891.66	\$2,886.40

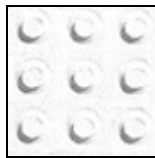
Custom Sizes - Per Sq. Ft. (Approximate)

Size	Qty. 1	Qty. 2-10	Qty. 11-25	Qty. 26+
2' Wide	\$13.30	\$13.21	\$13.17	\$12.90
3' Wide	\$13.30	\$13.21	\$13.17	\$12.90
4' Wide	\$13.30	\$13.21	\$13.17	\$12.90

Standard Colors



Black



White