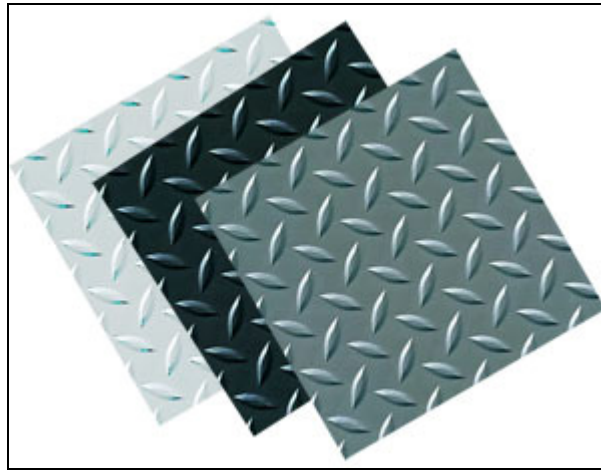


Diamond Tread Garage Floor Tiles



Diamond tread garage tiles are a favored design among auto enthusiasts. These tiles feature a classic racing look and match some popular garage storage cabinets. This pattern also provides improved traction and slip resistance.

- 95 mil thickness
- Standard 12" x 12" or Jumbo 24" x 24" tiles
- Easy peel & stick installation
- Flexible vinyl adheres to uneven floor spots
- These press and stick garage tiles will beautify your garage with a quick and easy installation. Diamond tread peel & stick tiles will hide cracks, stains and uneven concrete surfaces.
- Made from 100% solid polyvinyl, these tiles will not chip, curl, or crack and will provide you many years of exceptional performance.
- Featuring a specially formulated adhesive backing, these garage tiles will virtually seal your concrete from unwanted moisture and dirt. Its non-porous surface will keep dirt and moisture on the surface, allowing for easy cleaning.
- As the adhesive never fully hardens, it is easy to pull or replace a tile should it ever be necessary.
- These peel & stick garage tiles provide added cushion, traction, insulation, and noise reduction.

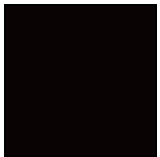
Standard Colors

Standard Sizes (Approximate)	
Size	Price / Case
12" x 12" Tile (Case of 20)	\$64.00
12" x 12" Tile (Case of 40)	\$126.00
24" x 24" Tile (Case of 10)	\$126.00

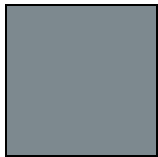
Premium Colors

Standard Sizes (Approximate)	
Size	Price / Case
12" x 12" Tile (Case of 20)	\$81.00
12" x 12" Tile (Case of 40)	\$160.00
24" x 24" Tile (Case of 10)	\$160.00

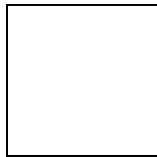
Standard Colors



Midnight Black



Slate Grey



Absolute White

Premium Colors



Red



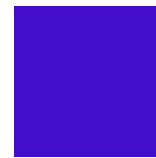
Orange



Gold



Yellow



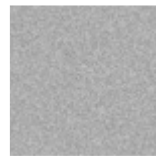
Purple



Blue



Green



Metallic Silver



Sandstone